



COMPONENTS OF PACKAGING:

1 ceiling canopy with terminal connectors, 3 metal light fixtures, 3 glass shades, 3 metal cord pulls, 9 screws for securing metal fixtures to ceiling canopy, 1 installation manual, 1 pair cotton gloves

WARNING:

Installation must be carried out by a qualified electrician only.

Switch off power at main circuit panel prior to installation!

The manufacturer assumes no liability for damage occurring in transport or resulting from incorrect installation.

Instalation time: 1hr / 3 persons



BROKIS®

BROKIS S.R.O.
ŠPANIĚLOVA 1315/25
163 00 PRAHA 6 - ŘEPY
CZECH REPUBLIC

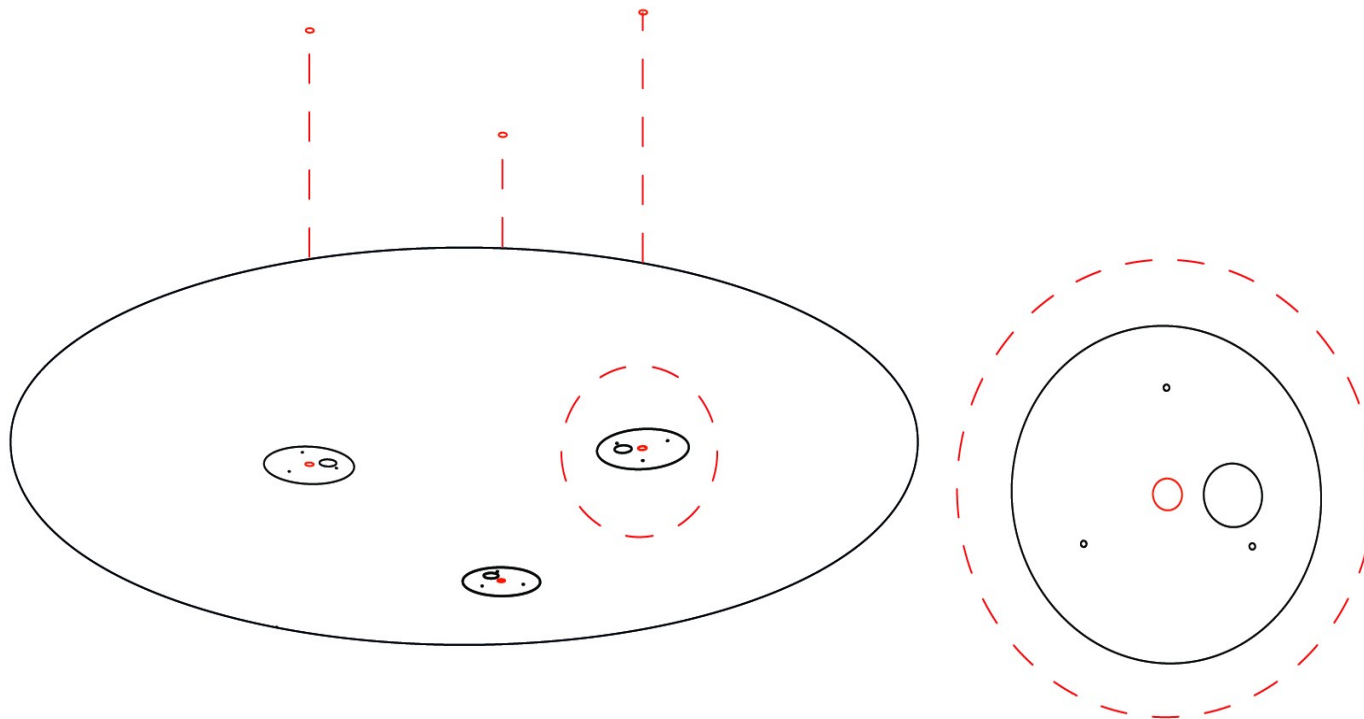
ORG. ID 64940799
VAT ID CZ64940799
C 42174 MĚSTSKÝ SOUD
V PRAZE

TEL +420 567 211 517
TECHNICAL@BROKIS.CZ
INFO@BROKIS.CZ
WWW.BROKIS.CZ

1. MARKING DRILL POINTS FOR CEILING CANOPY

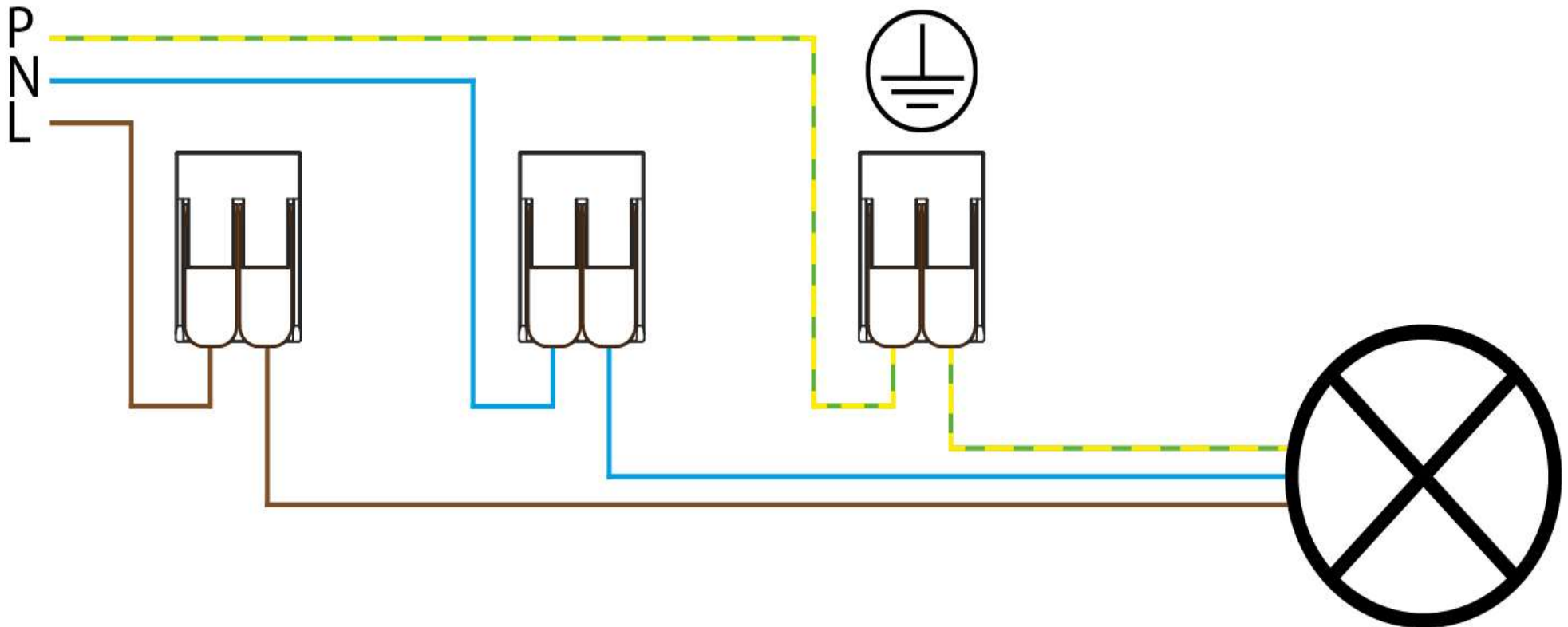
With regard to various types of ceilings, we recommend consulting installation with an expert. The manufacturer assumes no liability for incorrect installation, the use of improper anchors, or defects in the material to which the ceiling canopy is secured. Use anchors of sufficient strength (not included). When unpacking the light, do so with consideration for its material composition.

Position the ceiling canopy on the ceiling, mark the anchor holes, and then set the ceiling canopy aside. Next, drill the holes in the ceiling and insert anchor plugs of sufficient strength.



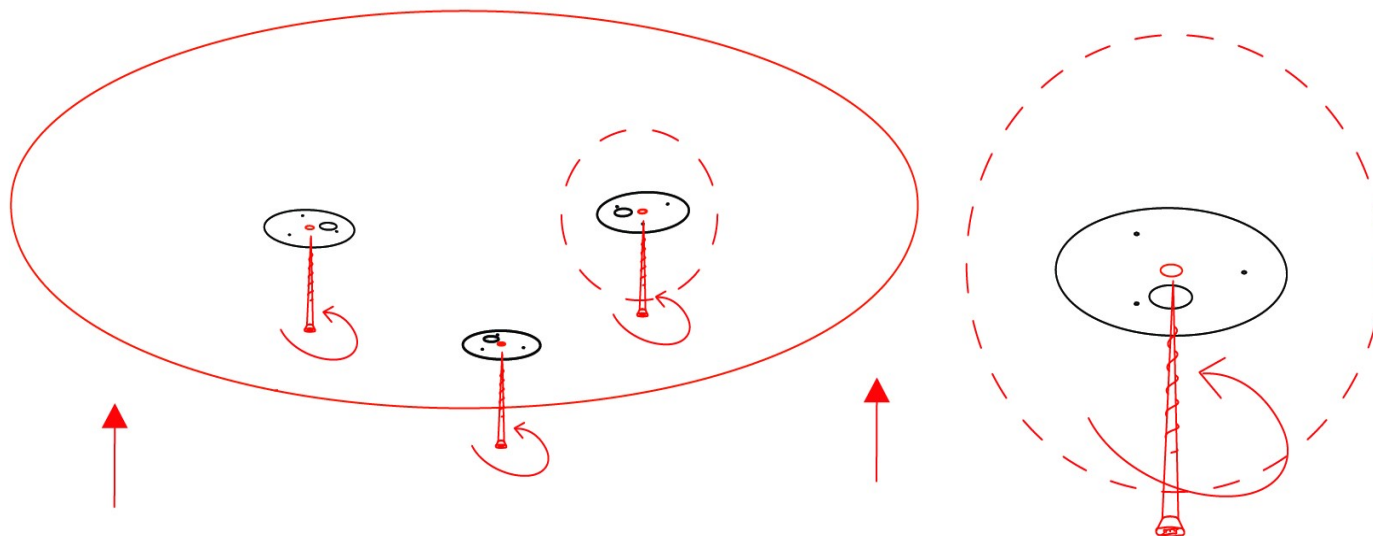
2. CONNECTING THE LIGHT TO THE BUILDING WIRING

Hold the ceiling canopy against the ceiling so the holes align with the anchor holes in the ceiling. Connect the ceiling canopy to the building wiring, including the ground wire, as shown in the connection diagram



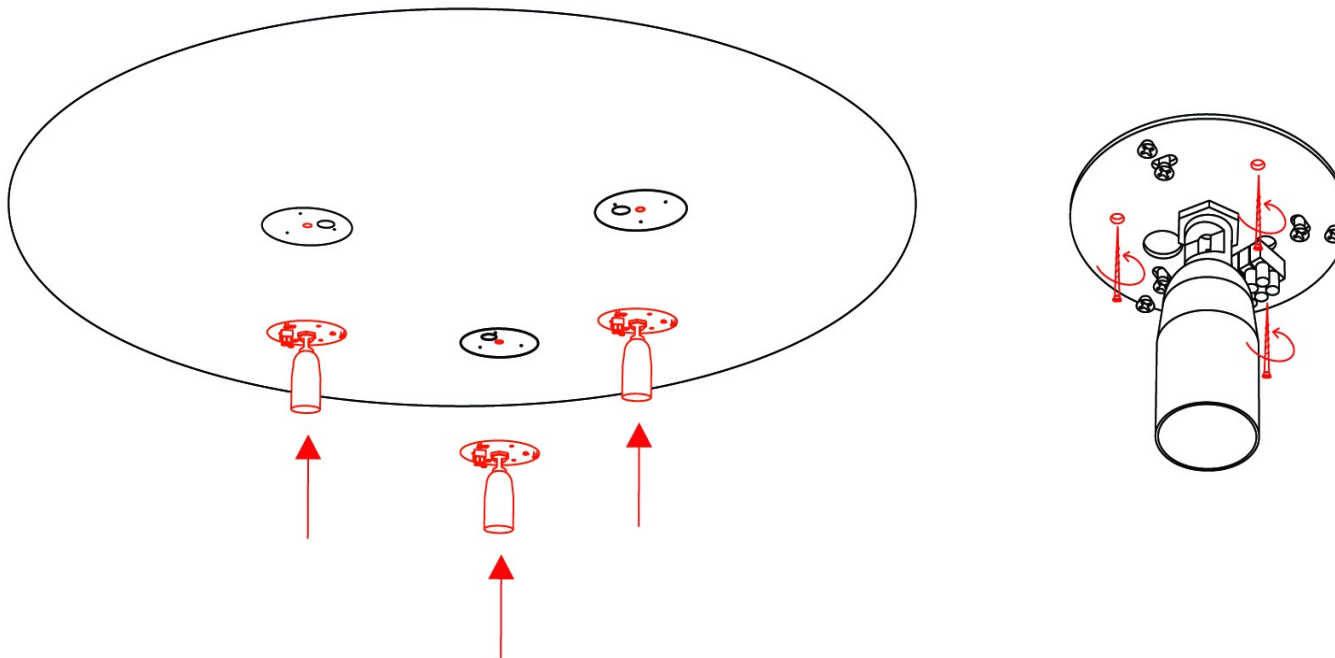
3. INSTALLING THE CEILING CANOPY

Secure the ceiling canopy to the ceiling using screws (not included).



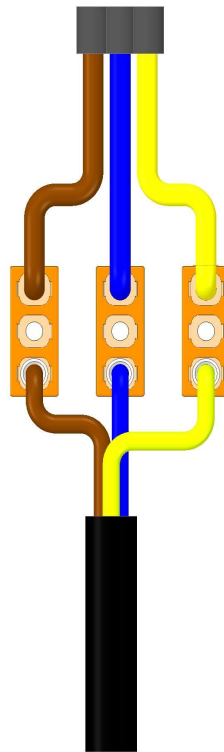
4. MOUNTING THE METAL LIGHT FIXTURES ON THE CEILING CANOPY

Using the screws included with the light, secure the metal light fixtures to the cutouts in the bottom of the ceiling canopy.



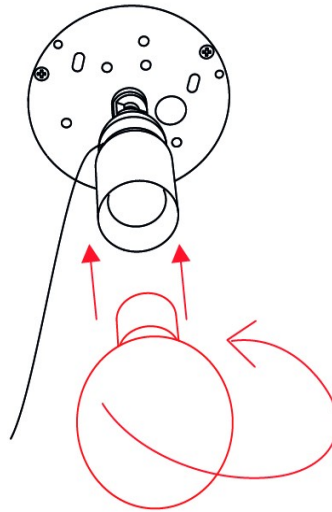
5. ELECTRICAL CONNECTION

Wire the light fixtures according to the connection diagram.



6. INSTALLING THE LIGHT SOURCES

Install the light sources (E27 bulbs - not included)

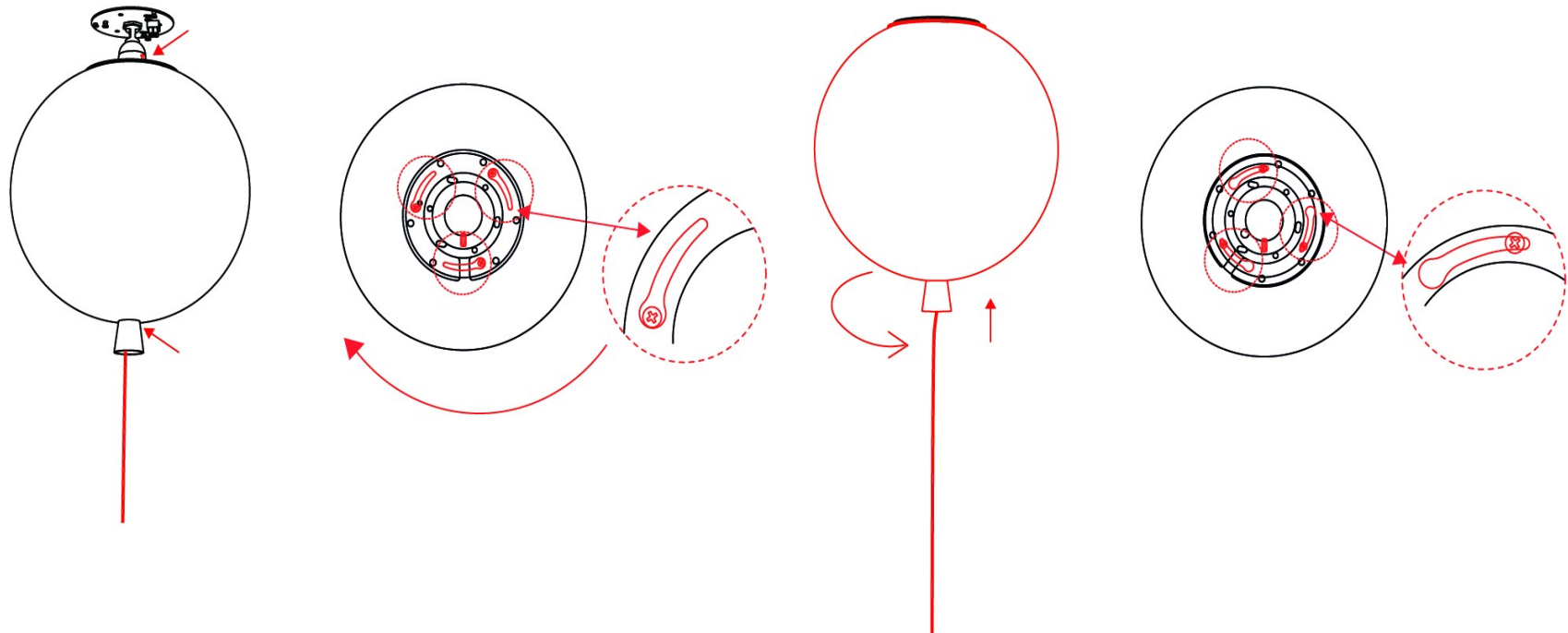


7. ATTACHING THE GLASS SHADES

Pass the cord hanging from the metal light fixture through first the large opening and then the small opening in the glass shade.

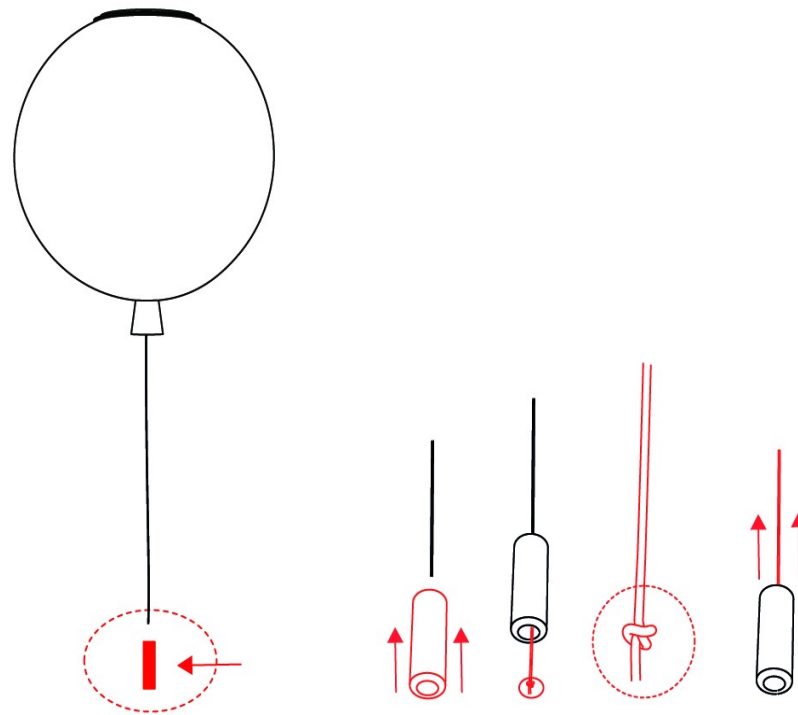
Connect the ground wire to the shade mounting ring.

Position the glass shade on the metal light fixture so that the screws pass through the openings in the shade mounting ring. Gently rotate the glass shade clockwise until it is secured firmly to the metal light fixture. If rotation is not smooth, do not use force. Reposition the glass shade and start again.



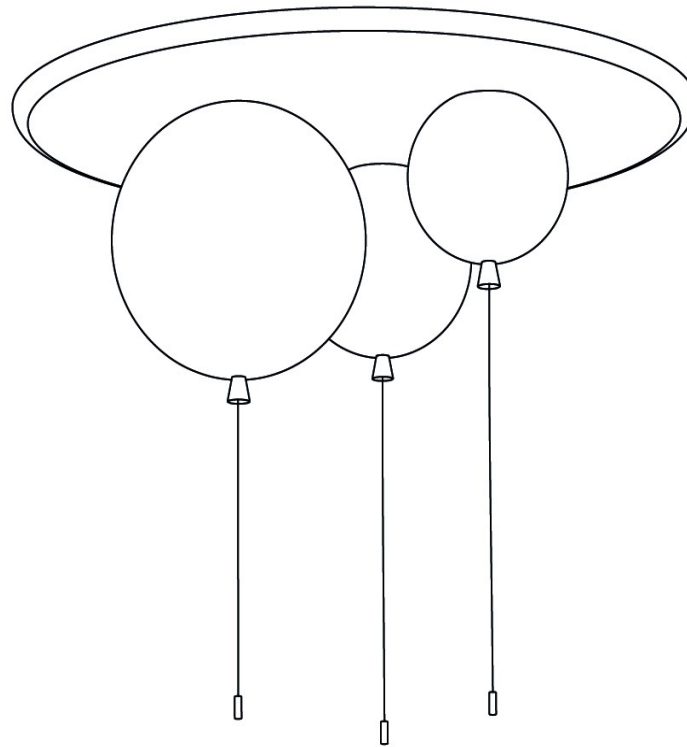
8. INSTALLING METAL CORD PULLS

Pass the cord through the metal cord pull and secure with a knot.



9. SWITCHING ON THE LIGHT

Restore power at the main circuit panel and verify that the light works properly.





The light can be cleaned using common cleaning agents. Never use solvents or abrasives (scouring powder).

PRIOR TO SHIPPING, THE FUNCTIONALITY OF EACH LIGHT AND ITS COMPONENTS IS THOROUGHLY TESTED. THE MANUFACTURER ASSUMES NO LIABILITY FOR THE MISHANDLING OF PRODUCTS



BROKIS®

BROKIS S.R.O.
ŠPANIELOVA 1315/25
163 00 PRAHA 6 - ŘEPY
CZECH REPUBLIC

ORG. ID 64940799
VAT ID CZ64940799
C 42174 MĚSTSKÝ SOUD
V PRAZE

TEL +420 567 211 517
TECHNICAL@BROKIS.CZ
INFO@BROKIS.CZ
WWW.BROKIS.CZ